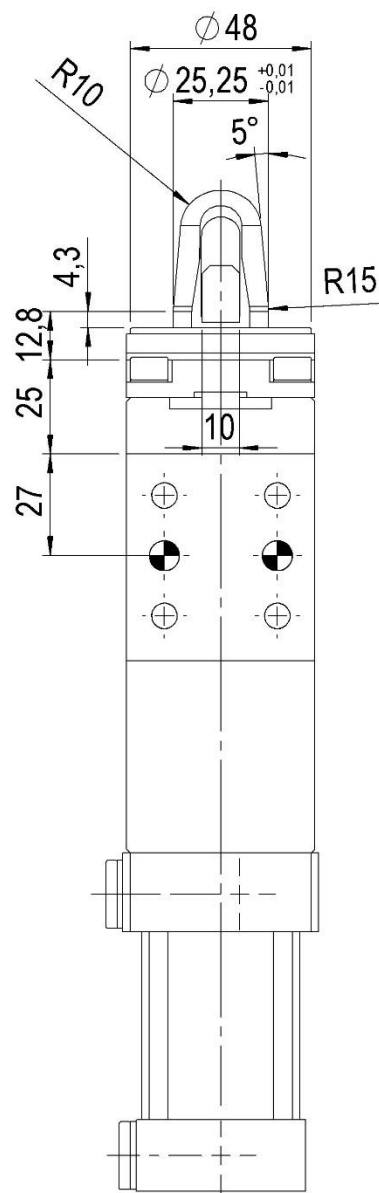
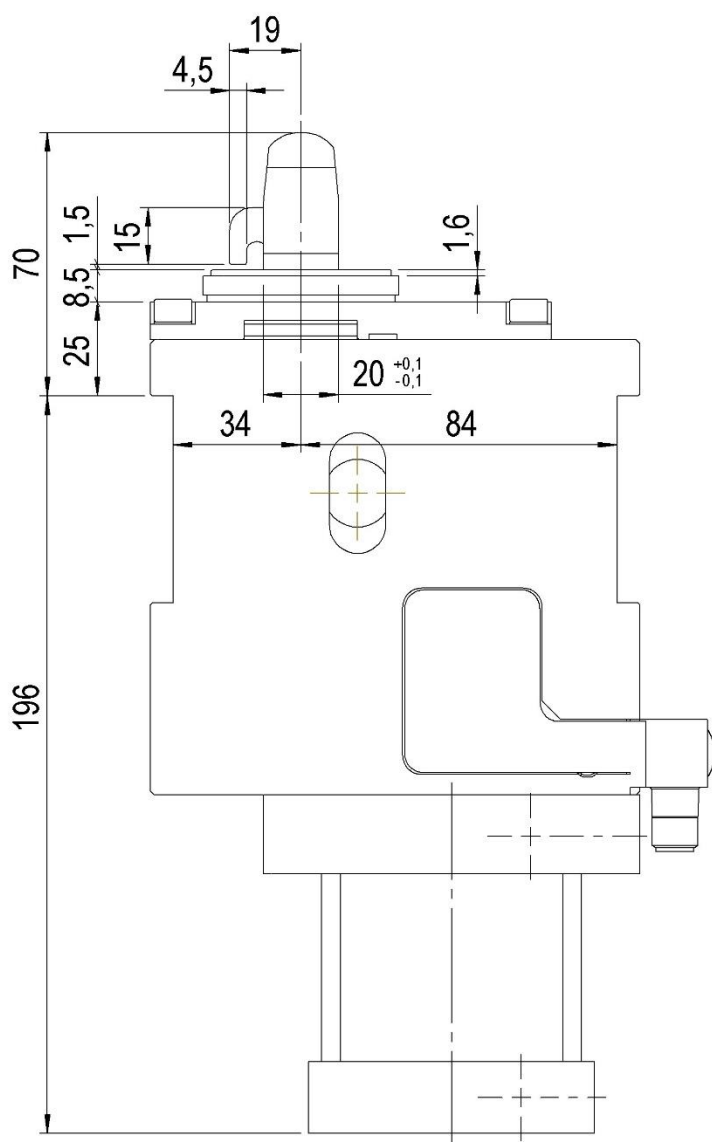


DCA50.1I-09590STD

Sub-Level, D. 50, customizzazione
Sub-level, D. 50, customization



Caratteristiche / Characteristic :

Perno / Pin $\varnothing 25,25 \pm 0,01 \times 20$

Altezza di bloccaggio / Locking height = $8,5 + 1,5 = 10$

Spessore elemento / Element thickness = **1,5**

Dimensioni standard: vedi catalogo
Standard dimensions: see the catalog

Modello Type	Alesaggio cilindro Cylinder bore	Forza max. di chiusura (6 bar) Max. clamping force (6 bar)	Peso Weight	Forza max. di ritegno Max. working force	Consumo d'aria (6 bar) Air consumption (6 bar)	Pressione d'esercizio Working pressure
	[mm]	[daN]	[Kg]	[daN]	[l]	[bar]
DCA50.1...	50	400	~5,7	470	~ 0,6	5 – 8